

# ViewSonic®

## *Digital Photo Frame*

### DPX802

- Quick Start Guide
- Guide de démarrage rapide
- Guía de Inicio Rápido



ViewSonic®

Model No. : VS12075

# Compliance Information

## FCC Statement

This device complies with part 15 of FCC Rules. Operation is subject to the following two conditions: (1) this device may not cause harmful interference, and (2) this device must accept any interference received, including interference that may cause undesired operation.

This equipment has been tested and found to comply with the limits for a Class B digital device, pursuant to part 15 of the FCC Rules. These limits are designed to provide reasonable protection against harmful interference in a residential installation. This equipment generates, uses, and can radiate radio frequency energy, and if not installed and used in accordance with the instructions, may cause harmful interference to radio communications. However, there is no guarantee that interference will not occur in a particular installation. If this equipment does cause harmful interference to radio or television reception, which can be determined by turning the equipment off and on, the user is encouraged to try to correct the interference by one or more of the following measures:

- Reorient or relocate the receiving antenna.
- Increase the separation between the equipment and receiver.
- Connect the equipment into an outlet on a circuit different from that to which the receiver is connected.
- Consult the dealer or an experienced radio/TV technician for help.

**Warning:** You are cautioned that changes or modifications not expressly approved by the party responsible for compliance could void your authority to operate the equipment.

## For Canada

- This Class B digital apparatus complies with Canadian ICES-003.
- Cet appareil numérique de la classe B est conforme à la norme NMB-003 du Canada.

## CE Conformity for European Countries



The device complies with the requirements of the EEC directive 2004/108/EC as amended by 92/31/EEC and 93/68/EEC Art.5 with regard to “Electromagnetic compatibility”, and 2006/95/EC as amended by 93/68/EEC Art.13 with regard to “Safety.”


## Following information is only for EU-member states:

The mark shown to the right is in compliance with the Waste Electrical and Electronic Equipment Directive 2002/96/EC (WEEE).

The mark indicates the requirement NOT to dispose of the equipment as unsorted municipal waste, but use the return and collection systems according to local law.



## Important Safety Instructions

1. Read these instructions.
2. Keep these instructions.
3. Heed all warnings.
4. Follow all instructions.
5. Do not use this unit near water.
6. Clean with a soft, dry cloth. If still not clean, see “Cleaning the Display” in this guide for further instructions.
7. Do not block any ventilation openings. Install the unit in accordance with the manufacturer’s instructions.
8. Do not install near any heat sources such as radiators, heat registers, stoves, or other devices (including amplifiers) that produce heat.
9. Do not defeat the safety purpose of the polarized or grounding-type plug. A polarized plug has two blades with one wider than the other. A grounding type plug has two blades and a third grounding prong. The wide blade and the third prong are provided for your safety. If the provided plug does not fit into your outlet, consult an electrician for replacement of the obsolete outlet.
10. Protect the power cord from being walked on or pinched particularly at plugs. Convenience receptacles and the point where they exit from the unit. Be sure that the power outlet is located near the unit so that it is easily accessible.
11. Only use attachments/accessories specified by the manufacturer.
12.  Use only with the cart, stand, tripod, bracket, or table specified by the manufacturer, or sold with the unit. When a cart is used, use caution when moving the cart/unit combination to avoid injury from tipping over.
13. Unplug this unit when unused for long periods of time.
14. Refer all servicing to qualified service personnel. Servicing is required when the unit has been damaged in any way, such as: if the power-supply cord or plug is damaged, if liquid is spilled onto or objects fall into the unit, if the unit is exposed to rain or moisture, or if the unit does not operate normally or has been dropped.

# Declaration of RoHS Compliance

This product has been designed and manufactured in compliance with Directive 2002/95/EC of the European Parliament and the Council on restriction of the use of certain hazardous substances in electrical and electronic equipment (RoHS Directive) and is deemed to comply with the maximum concentration values issued by the European Technical Adaptation Committee (TAC) as shown below:

Substance	Proposed Maximum Concentration	Actual Concentration
Lead (Pb)	0.1%	< 0.1%
Mercury (Hg)	0.1%	< 0.1%
Cadmium (Cd)	0.01%	< 0.01%
Hexavalent Chromium (Cr <sup>6+</sup> )	0.1%	< 0.1%
Polybrominated biphenyls (PBB)	0.1%	< 0.1%
Polybrominated diphenyl ethers (PBDE)	0.1%	< 0.1%

Certain components of products as stated above are exempted under the Annex of the RoHS Directives as noted below:

Examples of exempted components are:

1. Mercury in compact fluorescent lamps not exceeding 5 mg per lamp and in other lamps not specifically mentioned in the Annex of RoHS Directive.
2. Lead in glass of cathode ray tubes, electronic components, fluorescent tubes, and electronic ceramic parts (e.g. piezoelectronic devices).
3. Lead in high temperature type solders (i.e. lead-based alloys containing 85% by weight or more lead).
4. Lead as an allotting element in steel containing up to 0.35% lead by weight, aluminium containing up to 0.4% lead by weight and as a cooper alloy containing up to 4% lead by weight.

## Package contents

Check your Digital Photo Frame package for the following items.

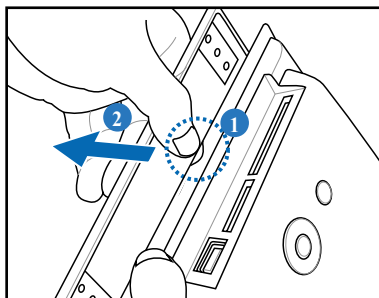
- Digital Photo Frame
- Power adapter
- Stand
- Quick Start Guide
- USB cable
- Replacement front panel\*

\* The bundled front panel varies depending on the model you purchase.

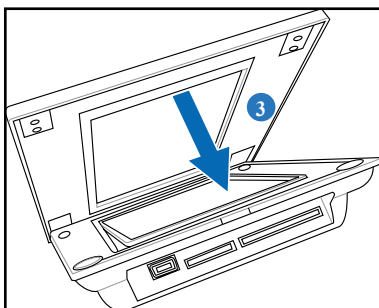
## Replacing front panel

If your Digital Photo Frame package contains a spare front panel, follow these instructions to replace the front panel for personal preference.

1. Locate the indent on the edge near the memory card socket.
2. Follow the direction of the figure and gently lift the front panel.

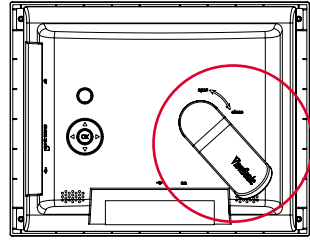


3. To install a new front panel, align the panel edge to the Digital Photo Frame and gently place the panel on the device.



## Connect


1. Align the head of the stand with the socket, then rotate clockwise until the stand locks into place.



2. Plug the power adapter from the device to a power outlet.


### Locate control keys (in the back panel)

Locate the control buttons in the back panel according to the following table.


Button	Function
OK	Enter or confirm the selection
Left	Move to the previous or left selection
Right	Move to the next or right selection
Up	Move upward
Down	Move downward
	Power On/Off

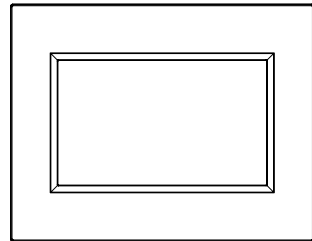
## Turn ON/OFF the device

### Turn on the device

Press  to turn on the device, then the main screen appears. The LED will light up in blue color.

### Turn off the device

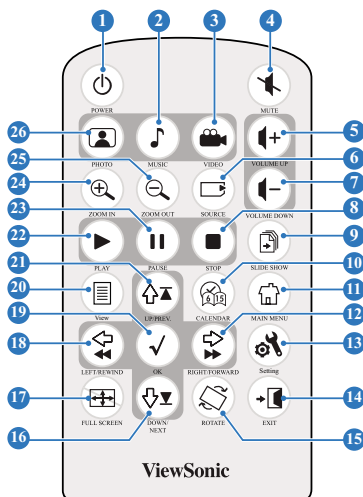
Hold  for 2 seconds then release to turn off the device.



**Tips:** If you can't turn on the device normally, please try to turn off the device then turn it on again.

# Remote Control

Refer to the following image and table for details of the remote control.



No.	Item	Description	No.	Item	Description
1	POWER	Disabled on this model	14	EXIT	Go back one menu level
2	MUSIC	Shortcut to the Audio menu	15	ROTATE	Rotate photo 90° clockwise
3	VIDEO	Shortcut to the Video menu	16	DOWN/NEXT	Navigate down in menus/skip to next available media
4	MUTE	Mute audio output	17	FULL SCREEN	Enlarge image to full screen
5	VOLUME UP	Increase audio volume	18	LEFT/REWIND	Navigate left in menus/rewind audio playback
6	SOURCE	Shortcut to Source menu	19	OK	Select/accept selected item
7	VOLUME DOWN	Decrease audio volume	20	View	Display advanced media options in media menus
8	STOP	Stop Video or Audio playback	21	UP/PREV.	Navigate up in menus/skip to previous available media
9	SLIDE SHOW	Start slide show of available photos	22	PLAY	Play selected media
10	CALENDAR	Disabled on this model	23	PAUSE	Pause current media
11	MAIN MENU	Display Main Menu	24	ZOOM IN	Enlarge photo image size
12	RIGHT/FORWARD	Navigate right in menus/fast forward audio playback	25	ZOOM OUT	Reduce photo image size
13	Setting	Shortcut to Settings menu	26	PHOTO	Shortcut to Photo menu



- POWER and CALENDAR functions are disabled on this model.
- ZOOM IN/OUT are only available using the remote control.

## Settings

### Brightness

Allows you to adjust the screen brightness.

### Language

Allows you to select the language you need.

### Default

Go to **SETTINGS > Default**, then select **Yes** to return to the factory default setting or **No** to discard the selection.

### Set Beep

Allows you to turn on/off the key control sound.

### Status

Displays the software version and the current memory size.

### Auto Tilt

Automatically adjusts the orientation of the screen when you rotate the frame. The default value is **On**.



Auto Tilt does not compensate if the frame is placed upside down—only 90° rotation clockwise or counter clockwise is supported.

---

### Volume

Allows you to adjust the volume between **0** and **16**. The default value is **8**.



You will see **Low battery please plug-in the power adapter** on the screen when the battery is low. Plug the power adapter immediately, or the device will be turned off soon.

---

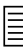


## View Photos

From the main screen, press the Up and Down navigation keys to select PHOTO, then select the photo source you want to display.

*Photos pre-stored in the device will appear when no memory card or USB flash disk is connected.*

When photo source is selected, press OK to switch between 3 view modes:

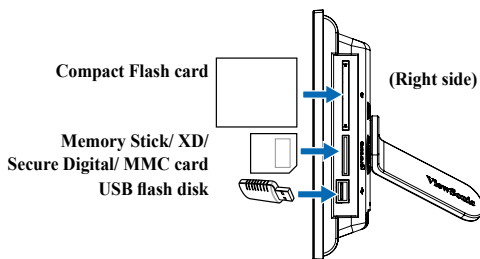
- **Browse mode:** manual viewing of photos one-by-one
- **Thumbnail mode:** list of all photos  
When viewing photos in Thumbnail mode, hold the Down navigation key  for 2 seconds then release to quickly enter the setting menu for photo-related settings, or press **View** on the remote control.

- **Slideshow mode:** automatically shifting display of photos


To exit the PHOTO function, switch to Thumbnail mode, then press the Up navigation key.

## View photos from your memory card or USB flash disk


1. Insert your memory card with photos into the corresponding slot, OR: insert your USB flash disk into the USB port.
2. Photos on your memory card will appear after a few seconds.




## Copy photos from your photo source

1. In Thumbnail mode, press the navigation keys to select one photo.
2. Hold the **Down** navigation key  for 2 seconds then release to quickly enter the setting menu, or press **View** on the remote control.
3. Select **Copy to** or **Copy all to**, then press OK.
4. Select the source where you want to store the selected photos.
5. Press **OK** to copy.


## Copy multi-photos

1. In Thumbnail mode, select one photo, then press the **Down** navigation key . The selected photo is labeled with a "+" mark.
2. Repeat step 1 to other photos you want to copy to a source.
3. Finishing selection, repeat step 2–5 in section **Copy photos from your photo source**.


## Delete photos from your photo source

1. In Thumbnail mode, press the navigation keys to select one photo.
2. Hold the **Down** navigation key  for 2 seconds then release to quickly enter the setting menu, or press **View** on the remote control.
3. Select **Delete** or **Delete all**, then press **OK**.

## Delete multi-photos

1. In Thumbnail mode, select one photo, then press the **Down** navigation key . The selected photo is labeled with a "+" mark.
2. Repeat step 1 to other photos you want to delete.
3. Finishing selection, repeat step 2–3 in section **Delete photos from your photo source**.

## Photo Setting menu

While in Thumbnail mode, hold the **Down** navigation key  for 2 seconds then release to enter the photo setting menu. You can adjust the screen view, slideshow sequence/effect/speed, copy or delete photos, effect, rotate photos, and set background music from the photo setting menu.

- **Full Screen:** sets the displayed photo to full screen.  
*When set to Full Screen, the displayed photo is automatically cropped to fit the screen.*
- **Slideshow Sequence:** sets the photo transition sequence.
- **Slideshow Effect:** sets the photo transition effect.
- **Slideshow Speed:** sets the photo transition frequency.
- **Copy/Copy all to:** copy one or all photos to a selected source.
- **Delete/Delete all:** delete one or all photos.
- **Effect:** displays photos in black and white.
- **Rotate:** rotate the displayed photo 0/90/180/270 degrees
- **Background Music:** display photos with background audio. Default value is **Off**.



Photo and Audio files must be from the same Source, for example, USB flash disk.

## Supported format

**JPEG:** JPEG Baseline (4:4:4/4:2:2/4:2:0, support up to 8000x8000 pixels),  
Progressive JPEG (Support up to 1024x1024 pixels)

**BMP:** MS Windows V3.1/4/8/16/24 uncompressed Bitmap. (Support up to 1024x1024 pixels)

*The system allows you to display 4000 photos at most from your own memory card or USB flash disk.*

## View Video


From the main screen, press the navigation keys to select VIDEO, then select the video source you want to play.

*Videos pre-stored in the device will appear when no memory card or USB flash disk is connected.*


1. Insert your memory card containing video into the corresponding slot, or insert your USB flash disk into the USB port. Videos on your memory card will appear after a few seconds. See page 9 for memory card and USB port locations.
2. Press the navigation keys to select the desired video, then press **OK** to view.
3. The selected video begins to play.

To exit the VIDEO functions, press **Main Menu** on the remote control.


## Advanced video functions

Press **View** on the remote control or hold the **Right** navigation key  **→→** for two seconds to enter the video settings menu.

### Repeat video

1. Press the navigation keys to select one video.
2. Press **View** on the remote control or hold the **Right** navigation key  **→→** for two seconds to enter the video settings menu.
3. Select **Video Repeat**, then press **OK**.
4. Select **All** to repeat all videos, or **One** to repeat only the selected video.
5. Press **OK** to play.


### Copy video from your video source

1. Press the navigation keys to select one video.
2. Press **View** on the remote control or hold the **Right** navigation key  **→→** for two seconds to enter the video settings menu.
3. Select **Copy to** or **Copy all to**, then press **OK**.
4. Select the source where you want to store the selected video.
5. Press **OK** to copy.

## Copy multi-video

1. Select one video, then press the **Right** navigation key. The selected video is labeled with a "+" mark.
2. Repeat step 1 for the other videos you want to copy to a source.
3. Finishing selection, repeat step 2–5 in section **Copy videos from your video source**.


## Delete video from your video source

1. Press the navigation keys to select one video.
2. Press **View** on the remote control or hold the **Right** navigation key  →→ for two seconds to enter the video settings menu.
3. Select **Delete** or **Delete all**, then press **OK**.

## Delete multi-video

1. Select one video, then press the **Right** navigation key. The selected video is labeled with a "+" mark.
2. Repeat step 1 for any other videos you want to delete.
3. Finishing selection, repeat step 2–3 in section **Delete videos from your video source**.

## Volume adjustment

1. Press the navigation keys to select one video.
2. Press **View** on the remote control or hold the **Right** navigation key  →→ for two seconds to enter the video settings menu.
3. Select **Volume**, then press **OK**.
4. Select the desired volume from 0 to 16.
5. Press **OK** to set the volume.



The volume can also be set through the **Setting** and **Audio** menus.

## Supported format

The following video formats are supported:

- M-JPEG
- MPEG1
- MPEG4 (SP)

## Play Audio


From the main screen, press the navigation keys to select AUDIO, then select the audio source you want to play.

*Audio pre-stored in the device will appear when no memory card or USB flash disk is connected.*


1. Insert your memory card containing audio into the corresponding slot, or insert your USB flash disk into the USB port. Audio on your memory card will appear after a few seconds. See page 9 for memory card and USB port locations.
2. Press the navigation keys to select the desired audio, then press **OK** to view.
3. The selected audio begins to play.

To exit the AUDIO functions, press **Main Menu** on the remote control.


## Advanced audio functions

Press **View** on the remote control or hold the **Right** navigation key  **→→** for two seconds to enter the audio settings menu.

### Repeat audio

1. Press the navigation keys to select one audio.
2. Press **View** on the remote control or hold the **Right** navigation key  **→→** for two seconds to enter the audio settings menu.
3. Select **Music Repeat**, then press **OK**.
4. Select **All** to repeat all audio, or **One** to repeat only the selected audio.
5. Press **OK** to play.


### Copy audio from your audio source

1. Press the navigation keys to select one audio.
2. Press **View** on the remote control or hold the **Right** navigation key  **→→** for two seconds to enter the audio settings menu.
3. Select **Copy to** or **Copy all to**, then press **OK**.
4. Select the source where you want to store the selected audio.
5. Press **OK** to copy.

## Copy multi-audio

1. Select one audio, then press the **Right** navigation key. The selected audio is labeled with a "+" mark.
2. Repeat step 1 for the other audio you want to copy to a source.
3. Finishing selection, repeat step 2–5 in section **Copy audio from your audio source**.


## Delete audio from your audio source

1. Press the navigation keys to select one audio.
2. Press **View** on the remote control or hold the **Right** navigation key  →→ for two seconds to enter the audio settings menu.
3. Select **Delete** or **Delete all**, then press **OK**.

## Delete multi-audio

1. Select one audio, then press the **Right** navigation key. The selected audio is labeled with a "+" mark.
2. Repeat step 1 for any other audio you want to delete.
3. Finishing selection, repeat step 2–3 in section **Delete audio from your audio source**.

## Volume adjustment

1. Press the navigation keys to select one audio.
2. Press **View** on the remote control or hold the **Right** navigation key  →→ for two seconds to enter the audio settings menu.
3. Select **Volume**, then press **OK**.
4. Select the desired volume from 0 to 16.
5. Press **OK** to set the volume.



---

The volume can also be set through the **Setting** and **Video** menus.

---

## Supported format

The following audio formats are supported:

- MP3 layer 1
- MP3 layer 2

# Customer Support

For technical support or product service, see the table below or contact your reseller.

**Note :** You will need the product serial number.

Country/Region	Web Site	T=Telephone F=Fax	E-mail
Australia/New Zealand	www.viewsonic.com.au	AUS=1800 880 818 NZ=0800 008 822	service@au.viewsonic.com
Canada	www.viewsonic.com	T (Toll-Free)= 1-866-463-4775 T (Toll)= 1-424-233-2533 F= 1-909-468-1202	service.ca@viewsonic.com
Europe/Middle East/ Baltic countries/North Africa	www.viewsoniceurope.com	Contact your reseller	
Hong Kong	www.hk.viewsonic.com	T= 852 3102 2900	service@hk.viewsonic.com
India	www.in.viewsonic.com	T= 1800 11 9999	service@in.viewsonic.com
Korea	www.kr.viewsonic.com	T= 080 265 9080	service@kr.viewsonic.com
Latin America (Argentina)	www.viewsonic.com/la/	T= 0800 666 0194	soporte@viewsonic.com
Latin America (Brazil)	www.viewsonic.com/la/	T= 0800 891 6984	soporte@viewsonic.com
Latin America (Chile)	www.viewsonic.com/la/	T= 800 440 303	soporte@viewsonic.com
Latin America (Columbia)	www.viewsonic.com/la/	T= 01 800 915 6588	soporte@viewsonic.com
Latin America (Mexico)	www.viewsonic.com/la/	T= 001 800 514 6518	soporte@viewsonic.com
Renta y Datos, 29 SUR 721, COL. LA PAZ, 72160 PUEBLA, PUE. Tel: 01.222.891.55.77 CON 10 LINEAS Electroser, Av Reforma No. 403Gx39 y 41, 97000 Mérida, Yucatán. Tel: 01.999.925.19.16 Other places please refer to <a href="http://www.viewsonic.com/la/soporte/index.htm#Mexico">http://www.viewsonic.com/la/soporte/index.htm#Mexico</a>			
Latin America (Peru)	www.viewsonic.com/la/	T= 0800 53458	soporte@viewsonic.com
Macau	www.hk.viewsonic.com	T= 853 700 303	service@hk.viewsonic.com
Puerto Rico & Virgin Islands	www.viewsonic.com	T= 1-800-688-6688 (English) T= 1-866-379-1304 (Spanish) F= 1-909-468-1202	service.us@viewsonic.com soporte@viewsonic.com
Singapore/Malaysia/ Thailand	www.ap.viewsonic.com	T= 65 6461 6044	service@sg.viewsonic.com
South Africa	www.viewsoniceurope.com	www.viewsoniceurope.com/uk/Support/Calldesk.htm	
United Kingdom	www.viewsoniceurope.com/uk/	www.viewsoniceurope.com/uk/Support/Calldesk.htm	
United States	www.viewsonic.com	T (Toll-Free)= 1-800-688-6688 T (Toll)= 1-424-233-2530 F= 1-909-468-1202	service.us@viewsonic.com



